

ESL 97/8 Daughterboard Installation:

Warning: ESL does not warranty against incorrect third party installation. An improper installation may result in damage to both motherboard and daughterboard.

1. Remove the motherboard from the case by unfastening the 6 screws on either side of the lid then the 2 longer screws securing motherboard to back plate. NB. The screws are held in with locking compound so be careful not to round the heads on initial removal.
2. Cut supplied 21 pin connector strips into lengths of 8, 10, 17, 18 and 21. NB. Cut through the strip at the location of the next spare pin.
3. Using professional through-hole de-soldering equipment and with reference to Table 1 and Figure 2, de-solder connector through holes and solder the supplied connector strips to the top side of board. Holes 38 and 39 of W110 are connected to a large earth plane and require extra heat to de-solder.

Connector	Holes	Strip Length
W110	2-39	21 & 17
W120	1-18	18
W120	23-30	8
W130	3-12	10

Table 1

4. Remove Resistors with numbers corresponding to Table 2, Figures 1&2:

Resistors to remove, Under Side of Motherboard:	
R903	R946
R905	R948
R907	R950
R909	R952
R911	R954
R913	R956
R915	R960
R917	R962
R919	R964
R921	R966

R923	R968
R942	R970
R944	
Resistors to remove, Top Side of Motherboard:	
R975	R977
R976	R978

Table 2

5. Set Jumpers according to Table 3 & Figure 1:

Jumpers:

J900	Short
J901	Remove
J902	Leave

Table 3

6. When securing the motherboard to the back plate, replace the long screw on the top right of the assembly (when the yellow plugs are at the top) with the supplied stand-off (See Figure 3).
7. Gently push the board into the connector strips, ensuring correct alignment.
8. Use a short screw and supplied washer to further secure the board to the supplied stand-off (See Figure 4).
9. Re-fasten the ECU lid.
10. Plug the ECU into a car and ensure that it operates as a standard ECU. As all boards are subject to full system test prior to release, abnormal behavior results from incorrect installation.

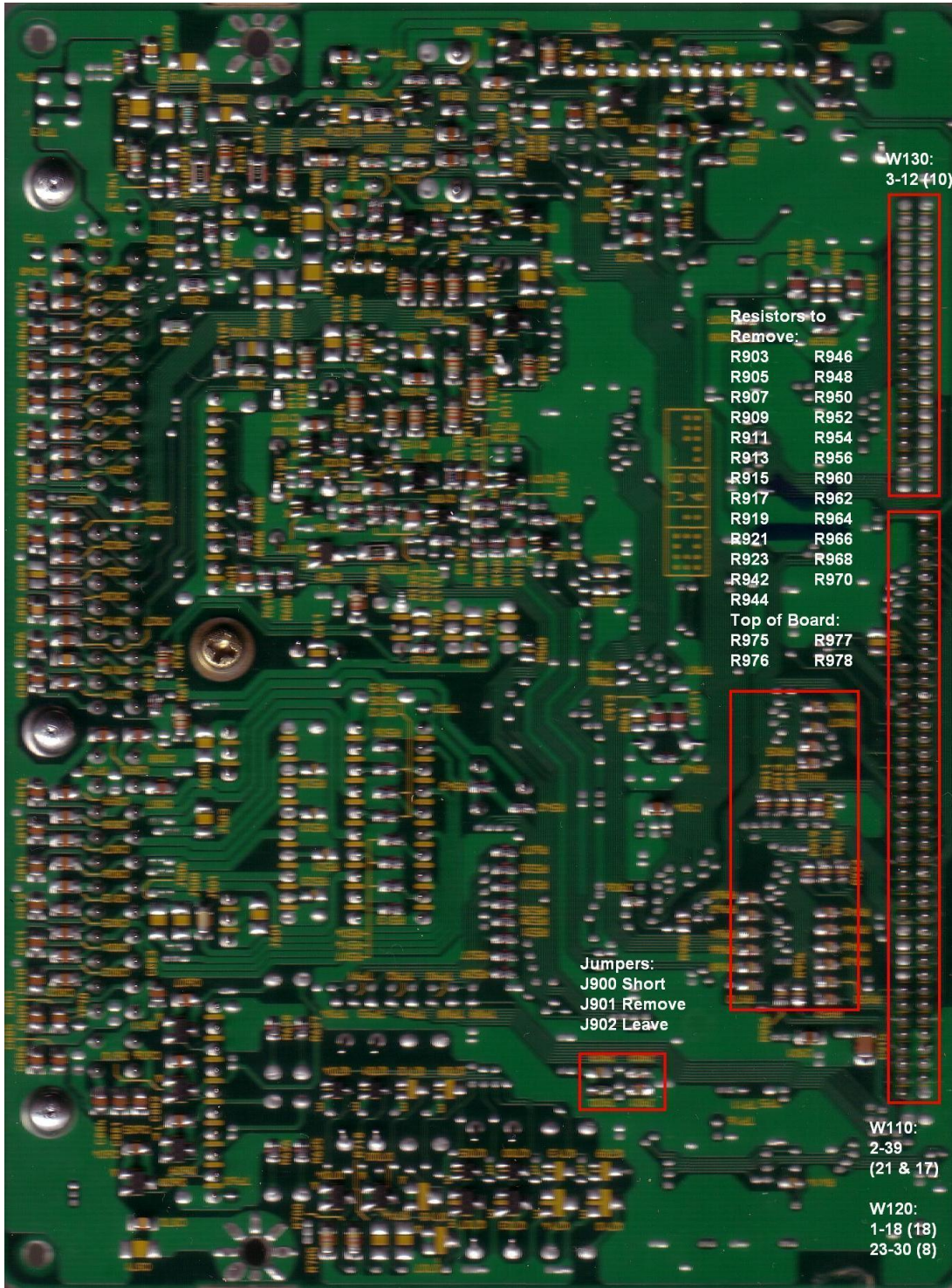


Figure 1: Underside of J ECS 97/8 Motherboard



Figure 2: Top of J ECS 97/8 Motherboard

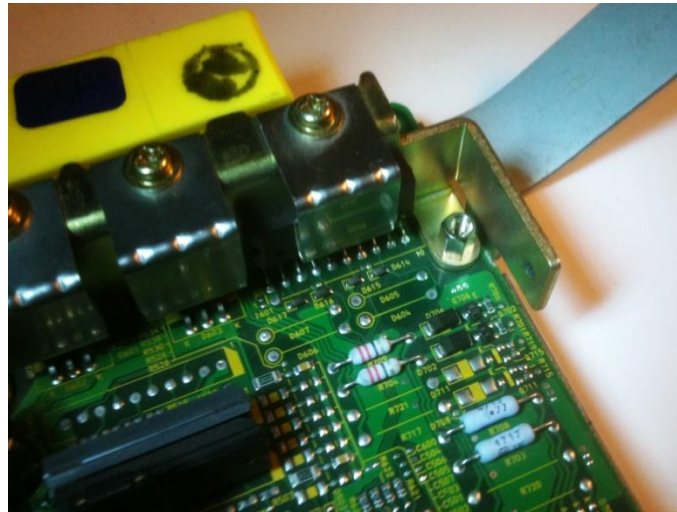


Figure 3: Stand Off

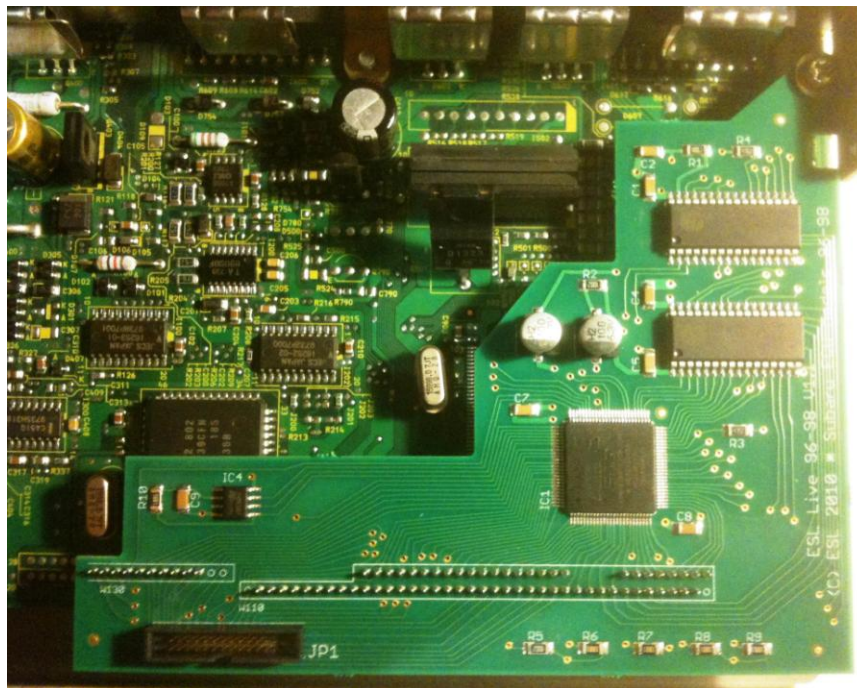


Figure 4: Daughterboard Installed